

# Who's Who?

---

Introductions

Name, Job Title, Agency, Location

What do you hope to learn? What are your goals?

# Working with Older Youth Cohort Goals

---

- ▶ Renewed focus on permanency for older youth, either a permanent family or committed, caring adult regardless of age.
- ▶ If permanency is not possible:
  - ▶ Ensure that every youth is supported in becoming a productive young adult.
  - ▶ Ensure that older youth in foster care and those exiting without permanence are prepared with basic skills needed for independence.
- ▶ Share challenges or barriers and develop ideas to address them within your organizational context.
- ▶ Share ideas and promising approaches that have been effective with this population



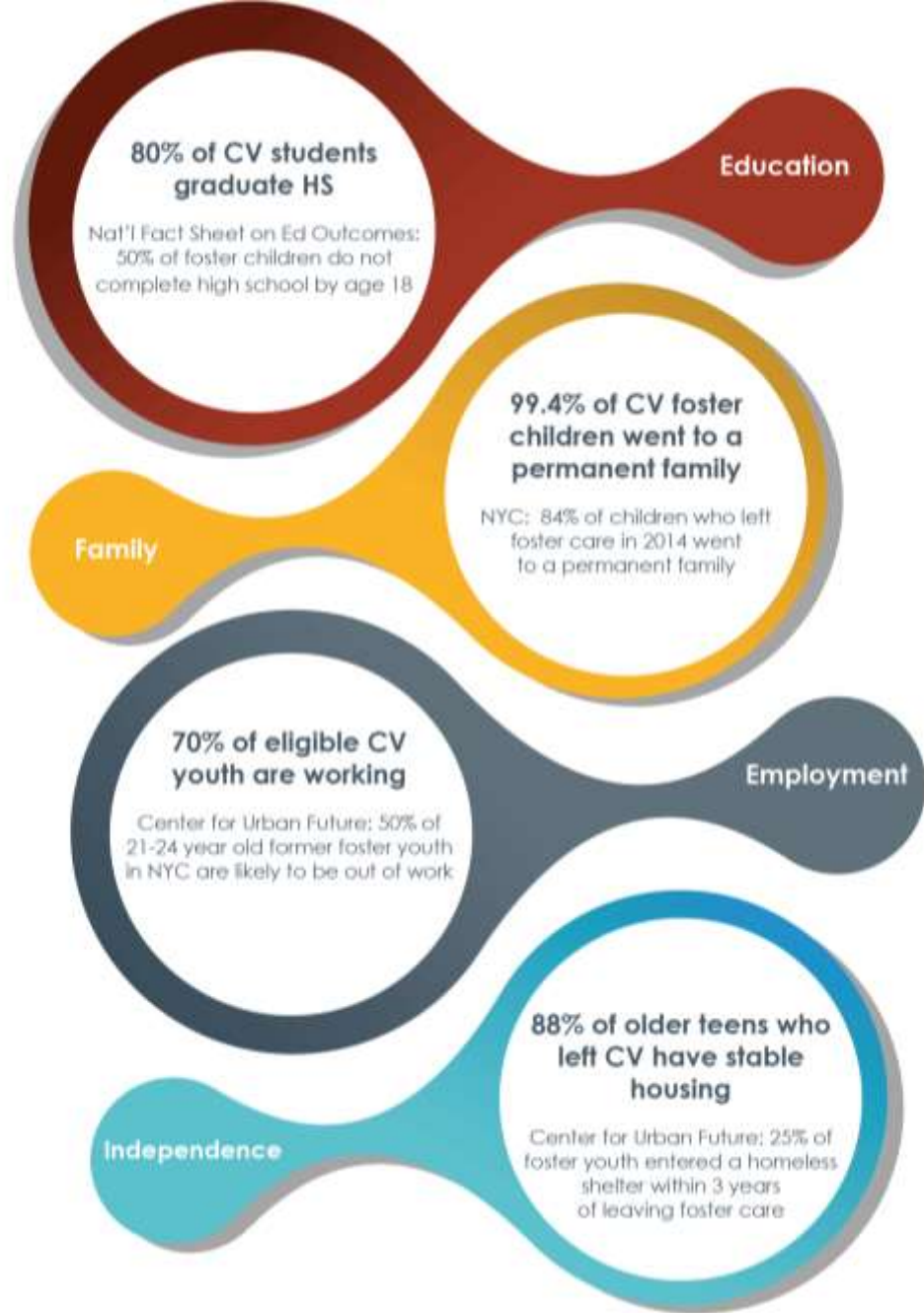
# Achieving Permanency for Teens in Residential Care

The Children's Village  
Provider Exchange with Lutheran Services Association

# CV contribution to ensuring that all children have bright futures

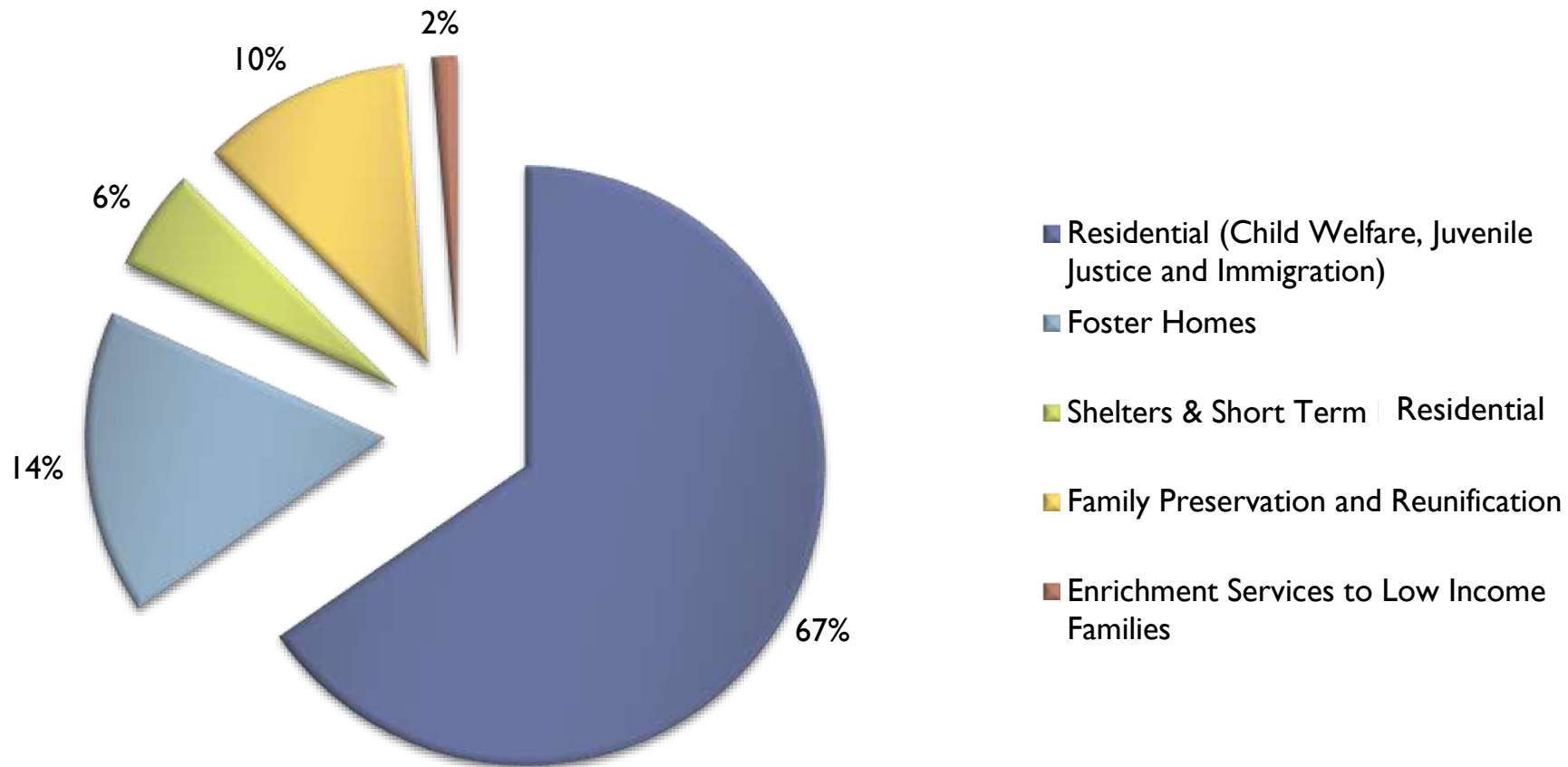


# CV has achieved positive results for older youth (2015 data)



# Children's Village has a diverse business model with a broad continuum of services

2015 Revenue Distribution by Program Type



# Permanency For Teens in Residential Care

---

- ▶ History
- ▶ Change in mindset
- ▶ Shifting our practice
- ▶ Where we are today
- ▶ Lessons learned

We believed teens in care would remain in residence if they could not return home

---

### **Past Beliefs**

- ▶ No one would adopt a teen
- ▶ At 21, youth can take care of themselves
- ▶ Foster parents would not accept teens
- ▶ Growing up in care was normal

### **Past Practice**

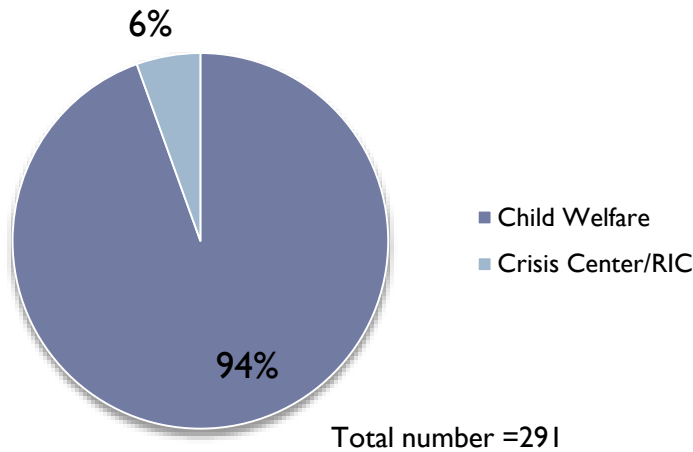
- ▶ Limited foster care recruitment
- ▶ Focus on kin as an option was not primary
- ▶ Lack of focus on reunification



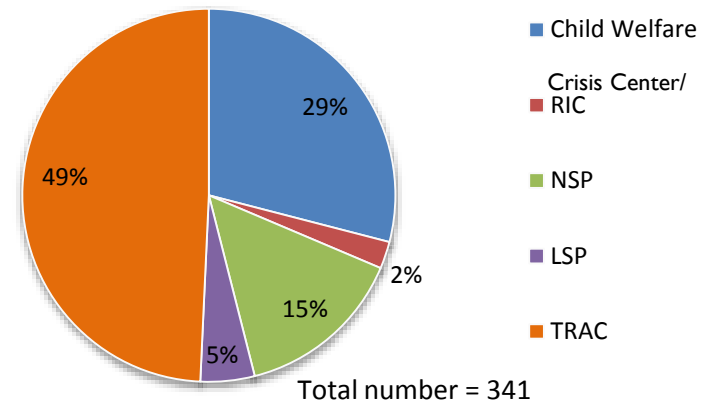
# Our shift in mindset resulted in a shift in who we served in our campus-based services

---

## Campus 2005



## Campus 2014



RIC – Crisis Center  
NSP - Non-Secure Placement  
LSP - Limited Secure Placement  
TRAC - Transitional Residence for Alien Children

# Our new mindset is optimistic and...

---

- ▶ Everyone deserves to be part of a family
- ▶ Youth deserve our best efforts
- ▶ We can change despair to hope
- ▶ “You miss 100% of the shots you don’t take”

# The stakes are high when we don't try

Compared to other young adults, youth who age out of foster care are:\*\*

- ▶ 2 times as likely to have **dropped out** of high school
- ▶ 2 times as likely to be **unemployed and unable to meet basic needs**
- ▶ 6 times as likely to have **physical and mental health issues**
- ▶ 2.5 times as likely to **become young, system-involved parents**
- ▶ 3 times as likely to **experience incarceration by age 19**
- ▶ 3 times as likely to **experience homelessness for one day or more**



\*\*Casey National Alumni Study, Midwest study of the adult functioning of former foster youth: Outcomes at age 27, Chapin Hall.

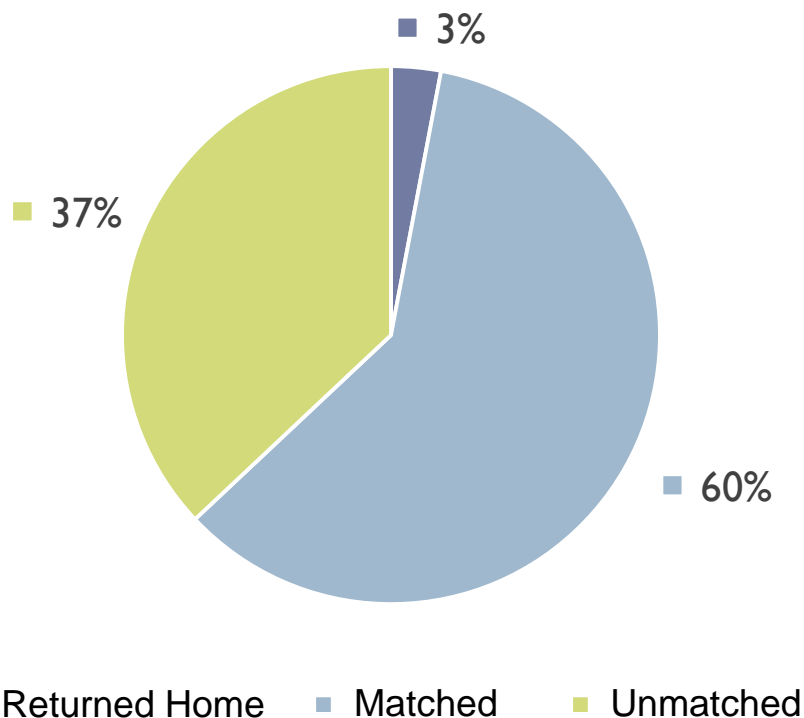
# Identifying our challenge

---

- ▶ Studied our data and found that too many teens had ~~with~~ a permanency goal of APPLA and were heading for group homes
- ▶ Developed a pilot program that targeted youth with a permanency goal of APPLA

From 2004-2007, 62% (42) of the 67 in the pilot were successfully matched with a foster family or returned home

### Placement Status of Youth

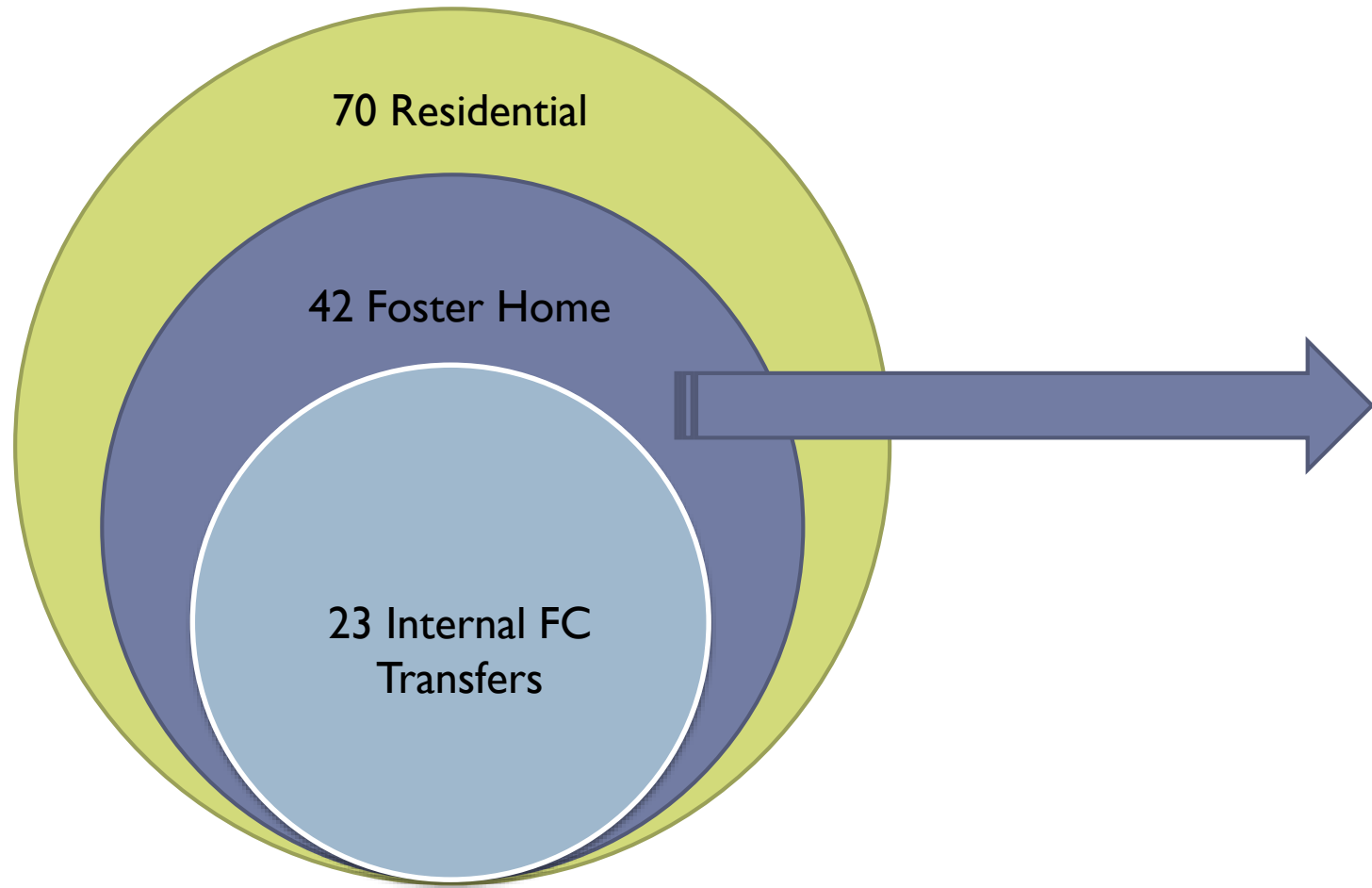


### ▶ # of moves for youth placed with a foster family

Outcomes	Youth
Matched (no further moves)	17
Matched with 1 Move	3
Matched with 2 Moves	2
Matched with 3+ Moves	8
Matched by Another FC Agency	10
Returned Home	2

# 2011-2014 Trackable residential to foster care cases

---





2011-2014, 60% (42) of the 70 youth in the program stepped down to a foster home

- ▶ # of moves for youth placed with a foster family\*

Outcome	# of Youth
Matched Successfully (no further moves)	11
Matched with 1 Move	1
Matched with 2 Moves	5
Matched with 3+ Moves	6
Matched by Another FC Agency	19

\* Point in time outcome through April 2016

# Permanency For Teens in Residential Care

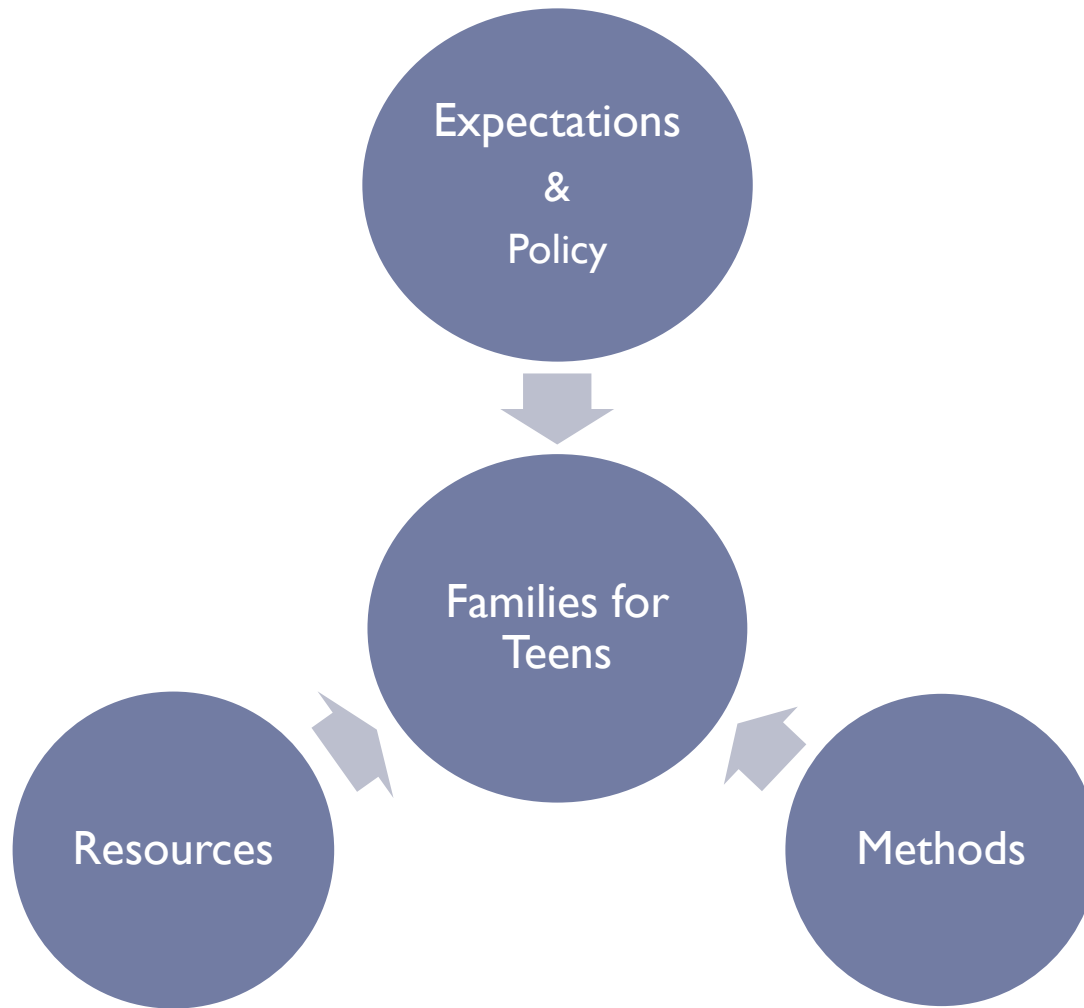
---

- ▶ History
- ▶ Change in mindset
- ▶ Shifting our practice
- ▶ Where we are today
- ▶ Lessons Learned



We needed to revamp our internal structures to support opportunities for older youth to live in a family.

---



# We reviewed and revised our expectations and policies to support older youth living with a family

---

- Agency allowed staff to become foster parents or adoptive resources
- Youth were in control of the matching process
- Developed culture of positive Expectations & Hopefulness for Teens



# We realigned our resources to support older youth living with a family

---

- Dedicated staff:  
Permanency specialist,  
Family Finding  
Caseworker
- Specialized Recruitment:  
Internal and then  
Community  
Partnerships
- Online Search Engines



# We instituted new techniques and methods to support older youth living with a family

---

- Training Staff
- Family Finding  
Standard of Practice
- Teen-Focused Foster  
Parent Training



# Permanency For Teens in Residential Care

---

- ▶ History
- ▶ Change in mindset
- ▶ Shifting our practice
- ▶ Where we are today
- ▶ Lessons Learned

# CV's approach to supporting families for teens is deeply embedded in our practice

---



**AND...**





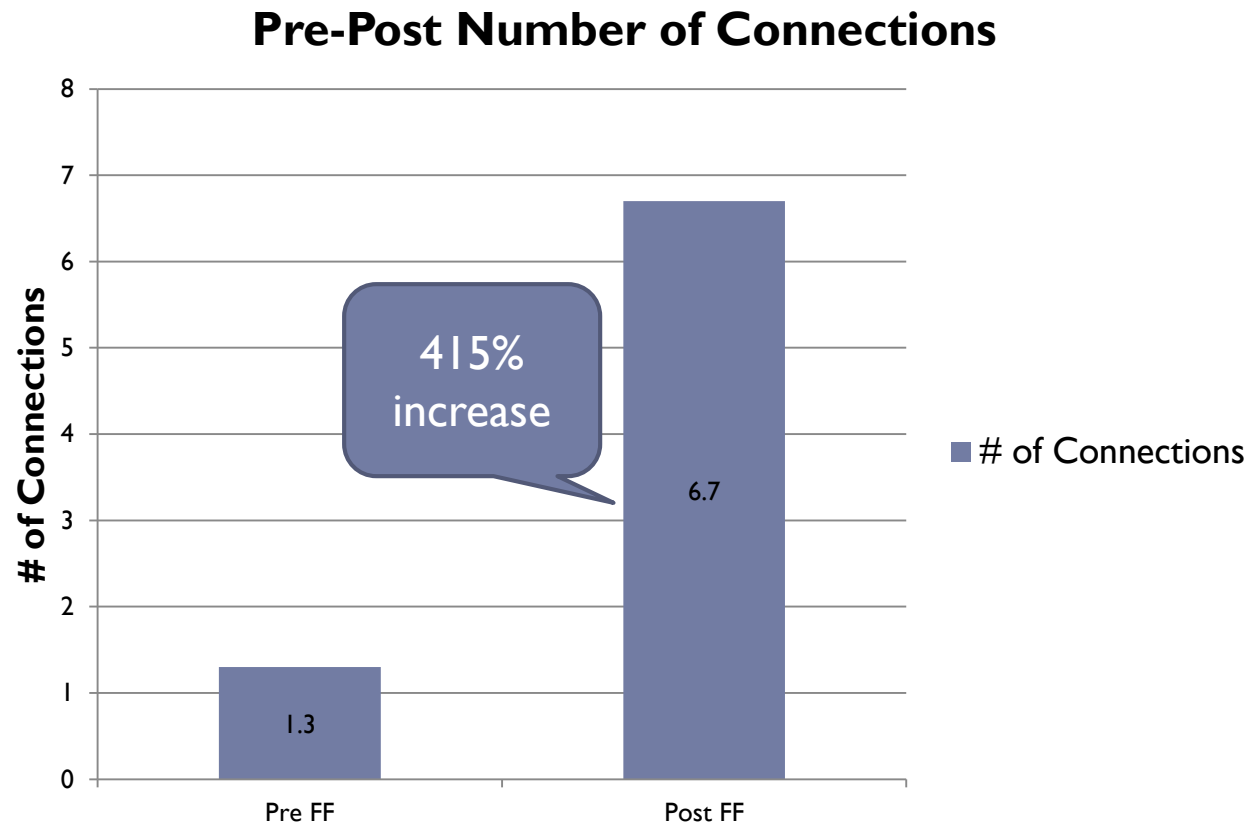
# ACTIVITY - Family Finding Tools

Connectedness Map

# Family Finding is a powerful tool to help increase connections that may lead to family and permanency

---

- Statistically significant increase in the number of connections





Youth receiving intensive family finding services will have more visiting and discharge resources than they had before.

- 92% (36) of the youth had at least one visiting resource
- 89% (35) of the participants had face-to-face visits with a newfound family member
- 67% (26) of youth had weekly visits

n=40

# Permanency For Teens in Residential Care

---

- ▶ History
- ▶ Change in mindset
- ▶ Shifting our practice
- ▶ Where we are today
- ▶ Lessons Learned

# We identified 3 core principles

---

- ▶ Consider everyone- past and present
- ▶ Rebuild trust
- ▶ Be honest

# ACTIVITY: Sharing our homework

---

- ▶ Who is your loneliest child?
- ▶ How many youth have a goal of APPLA or Adoption?
- ▶ What is your length of stay in residential care?
- ▶ What is your view (guardianship, reunification or adoption) of legal permanency or emotional/relational permanency for older youth?
- ▶ Who are your most passionate and committed staff?
- ▶ What are your current recruitment activities for permanent homes or connections for older youth?
- ▶ What would happen to your campus if youth stayed less time?
- ▶ What concerned you in your findings to the preceding questions?
- ▶ Next steps